

WELLCRAFT **355**

SUMMARY

SPECIFICATIONS

CONCEPT

KEY POINTS

EXTERIOR

INTERIOR

ATMOSPHERE

ELECTRONIC PACKAGES

TECHNICAL DATA



SPECIFICATIONS



OVERALL LENGTH :
38'10" | 11,85 m

BEAM :
10'9" | 3,30 m

APPROX. WEIGHT :
16 131 Lbs | 7 317 Kg

DRAFT :
2'9" | 0,89 m

WATER CAPACITY :
42 US GAL | 160 L

FUEL CAPACITY :
264 US GAL | 1000 L

Max engine power :
1050 HP

EC Category:
B10 / C12

Designers:
C&D / Garroni Design / Michael
Peters



CONCEPT

WELLCRAFT UNVEILS THE 355: BUILT TO PUSH LIMITS

The Wellcraft 355 takes the lead in every aspect; outstanding design, comfort, and most importantly, speed and seaworthiness. Designed to push the limits - out past the horizon where the water is deep and adventure begins - Wellcraft utilizes its rich heritage of offshore experience to push into this new market with American flare and shameless enthusiasm.



Designed to Push Limits

Every inch of the Wellcraft 355 has been designed to the highest standards. Wellcraft teamed up with famed American naval architect, Michael Peters, the most talented yacht designer, Pawel Denert and Camillo Garronni. This winning team created this outstanding design to offer a fast and seaworthy American outboard commuter for those looking to push their limits further and faster in every sea conditions.

With triple Mercury or Yamaha engines, providing up to 1,050HP the Wellcraft 355 reaches top speeds over 50 knots (60mph).

CONCEPT

Strong luxurious design

The Wellcraft 355 allows boaters to combine the thrill of piloting at high speed and the ability to discover unexplored places with a lifestyle of relaxation and luxury. The spacious wheelhouse with fully equipped galley provides comfort for five while cruising along. A sliding side door at the helm grants convenient access to the side passage and front cockpit. Three large sunbathers, with a spacious bench in the bow, create a luxurious place for relaxing. On the either side of the aft cockpit, two large side gates enable easy boarding access.

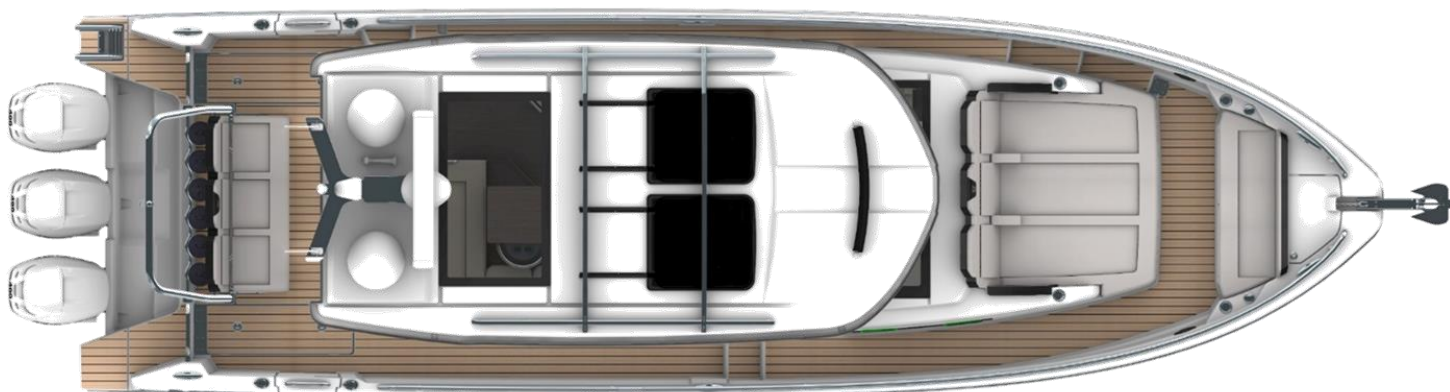


One of the most extraordinary features of the Wellcraft 355 is the connection between the wheelhouse and the aft cockpit: simply open the top-hinged window and entrance door and feel the outside getting inside. Find the real luxury feeling of the Wellcraft 355 stepping down in the spacious front cabin with a fullsize bed and ensuite bathroom with separate shower.

KEY POINTS

- The First and Fast American outboard commuter
- 5 people facing forward in driving position
- Comfortable salon with connection to the cockpit
- Two big side gates
- Big bow cockpit
- 2 cockpit modules : bench or family fishing module
- Rich and spacious interior

EXTERIOR



EXTERIOR



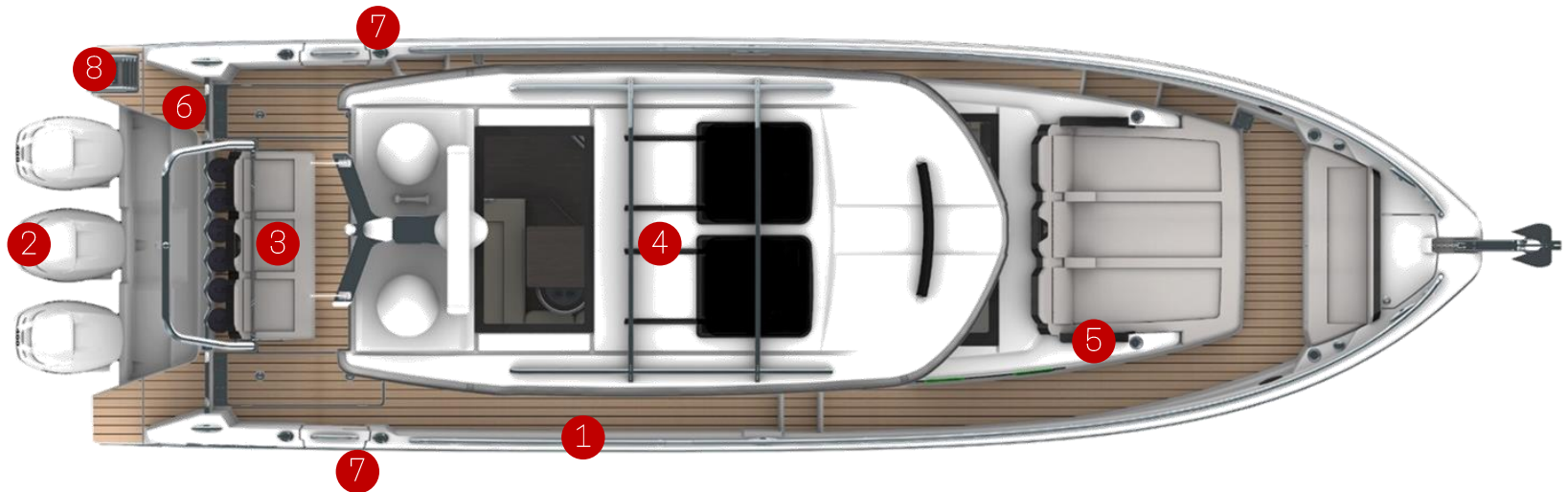
- ① Aft cockpit bench w/ 3 seats
- ② 2 Side gates on each side
- ③ Bar/grill modul on portside
- ④ Wheelhouse glasses
- ⑤ Sunroof

EXTERIOR



- ① Electric roof hatches
- ② 2 Side gates on each side
- ③ Forward sundeck 3 seats with armrests
- ④ Front cockpit bench
- ⑤ Radar GARMIN (option)

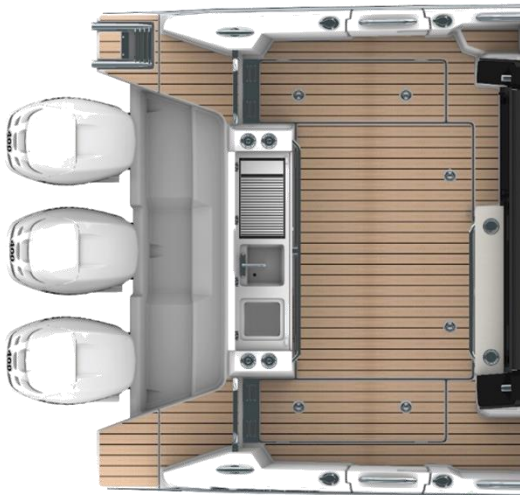
EXTERIOR



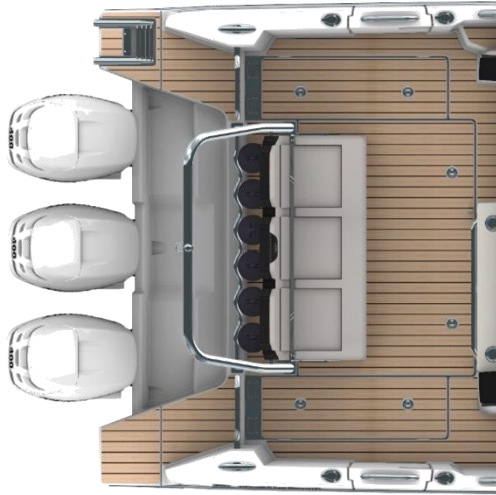
- ① Asymetric deck layout
- ② 2 or 3 engines
- ③ Foldable aft bench w/ 3 seats (option)
- ④ Sunroof and roof rack on the top
- ⑤ Front sundeck with cup holders
- ⑥ Stainless steel gate (standard)
- ⑦ Side gate on each side w/ lateral ladder (option)
- ⑧ Aft ladder

EXTERIOR

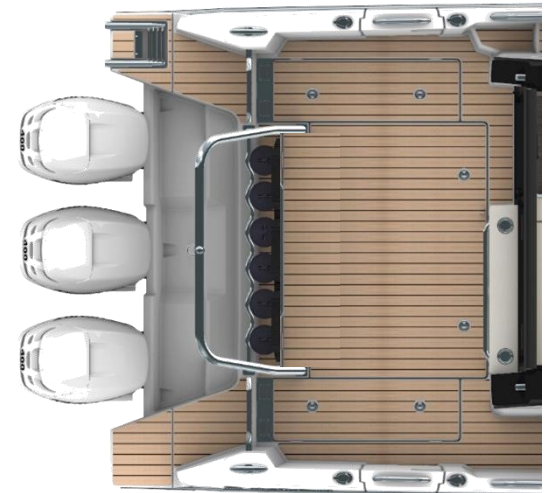
MODULAR AFT COCKPIT



- 1 Aft cockpit galley with :
- 2 cupholders
 - Storage
 - Sink

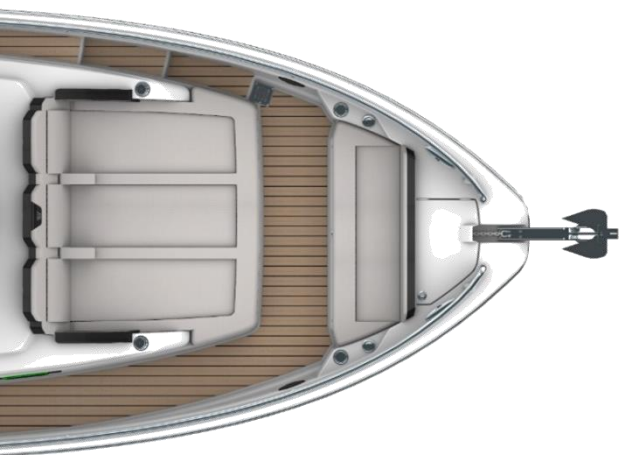


- 2 Aft cockpit bench with :
- Ski mast arch
 - 3 seats
 - Fenders storage



- 3 Ski mast arch

EXTERIOR



1

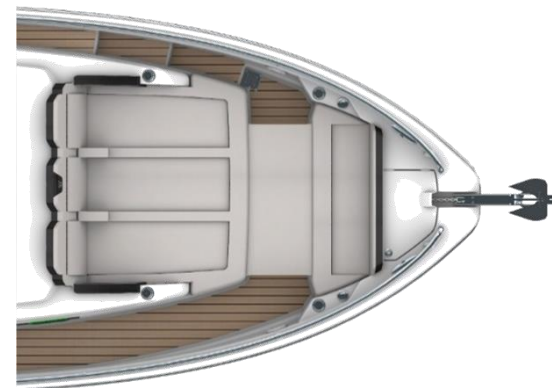
Forward sundeck 3 seats
with armrests

A TRUE COCKPIT AREA



2

2 sunpad with cupholders
modul (2)
6 cupholders in the front area



3

Generous front sundeck
with sunbathing
supplement

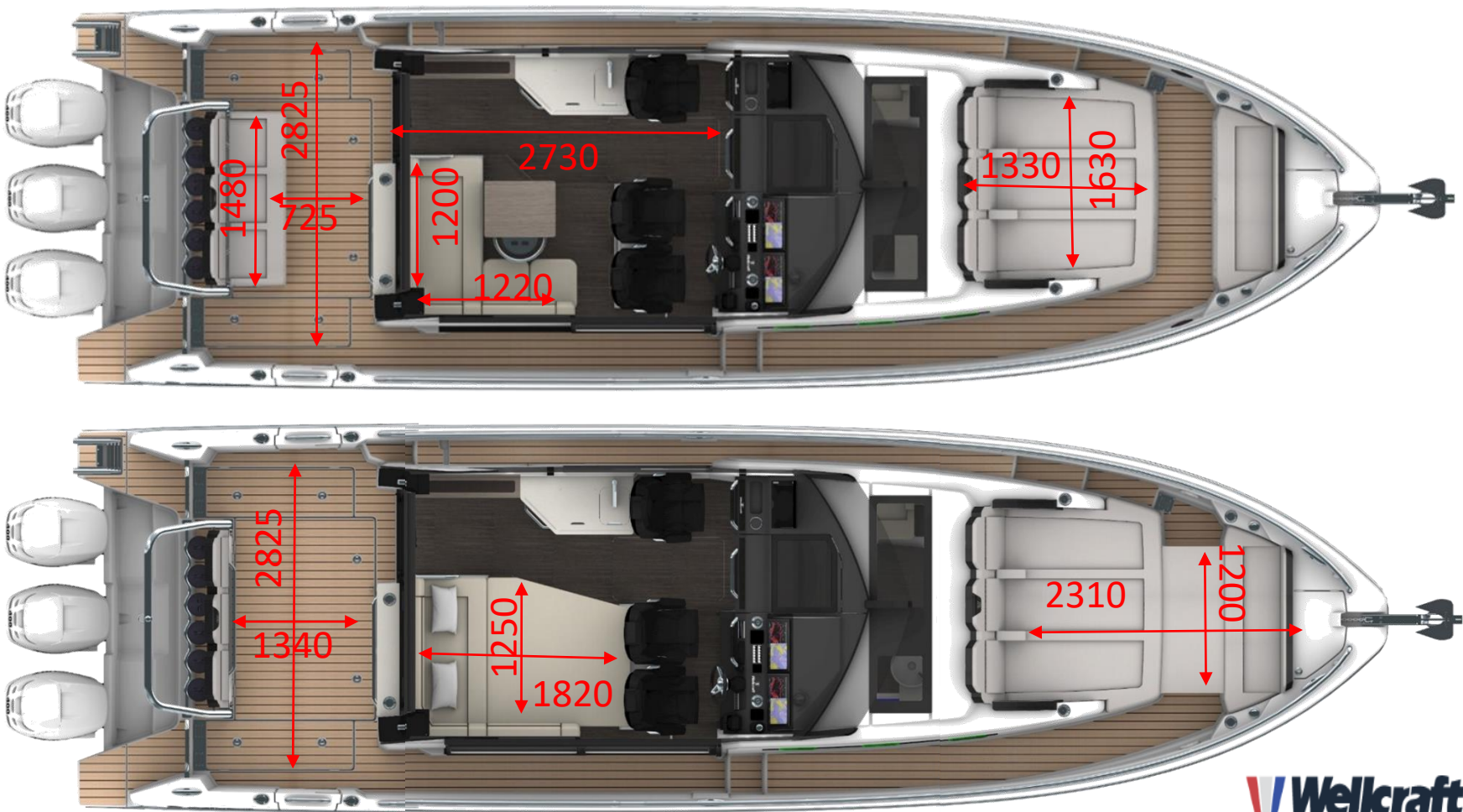
EXTERIOR

EXTERIOR LIGHTS



EXTERIOR

FOCUS ON COCKPIT DIMENSIONS



EXTERIOR



With macerator pump



Storage w/ permanent gas bottle compartment

INTERIOR



INTERIOR

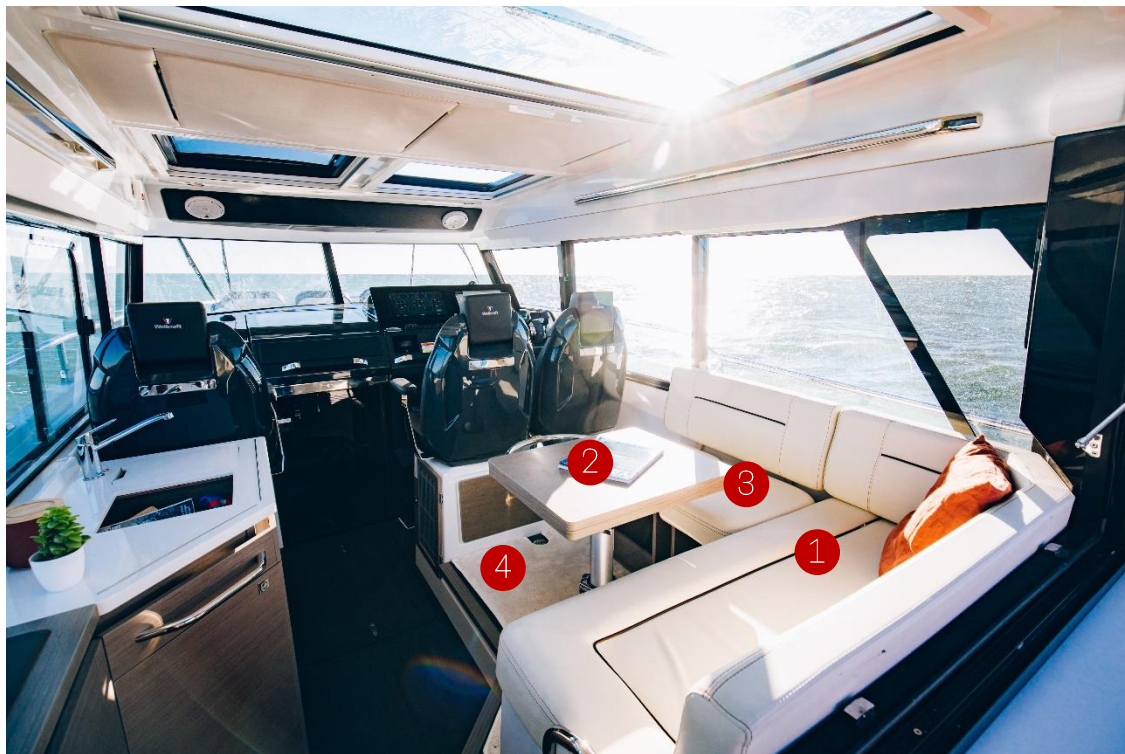
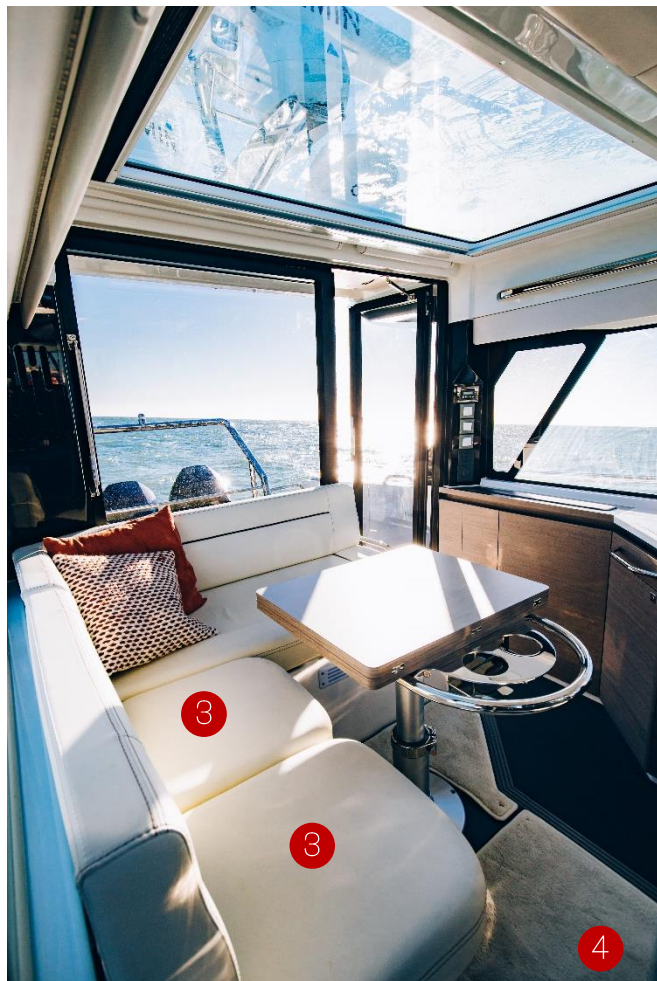
WHEELHOUSE



- ① Fridge 80L / 21 US Gal
- ② Bar storage
- ③ Vitroc ceramic cooktop
- ④ Sink
- ⑤ Electric panel

INTERIOR

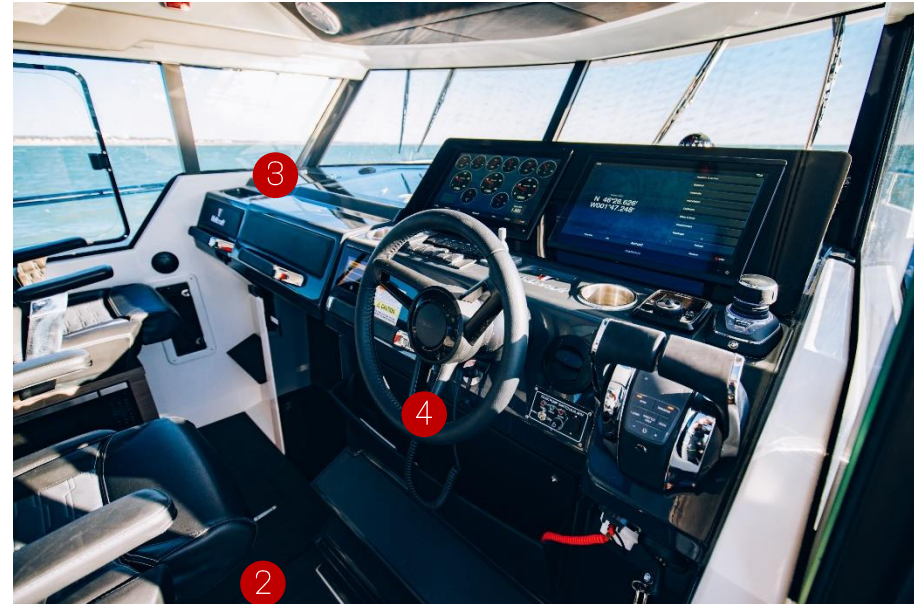
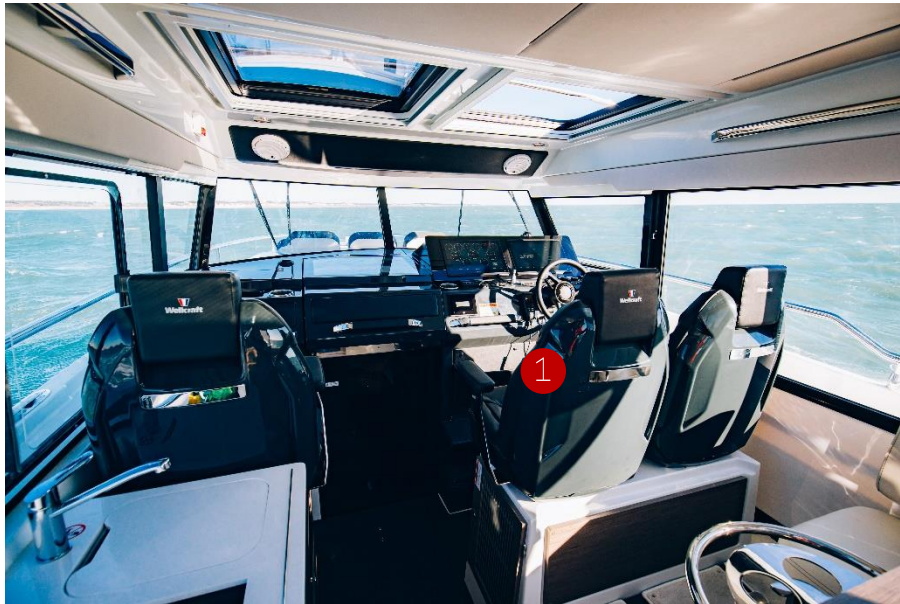
WHEELHOUSE



- ① Bench for 2 persons
- ② Table convertible into double bed
- ③ 2 wheelhouse stools
- ④ Removable carpet

INTERIOR

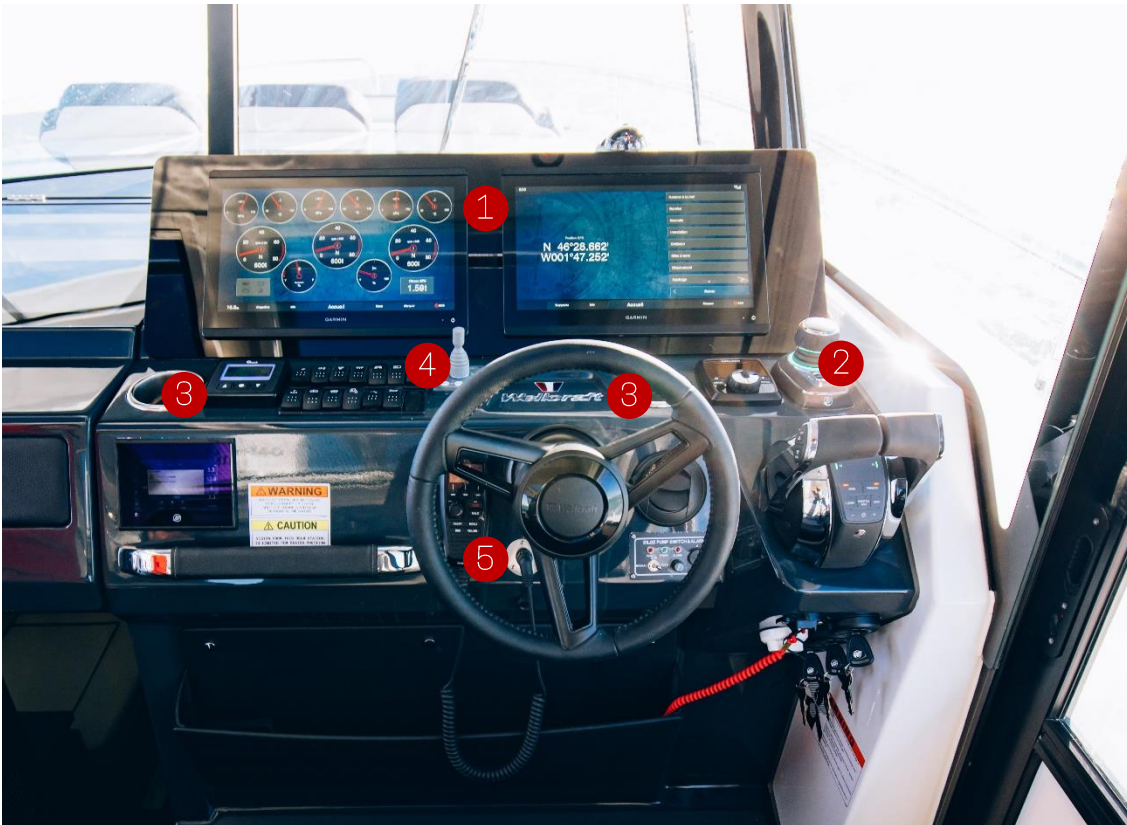
HELM STATION



- ① 3 individual sliding bolster seats
- ② Folding footrest
- ③ Storage
- ④ Tilt steering wheel

INTERIOR

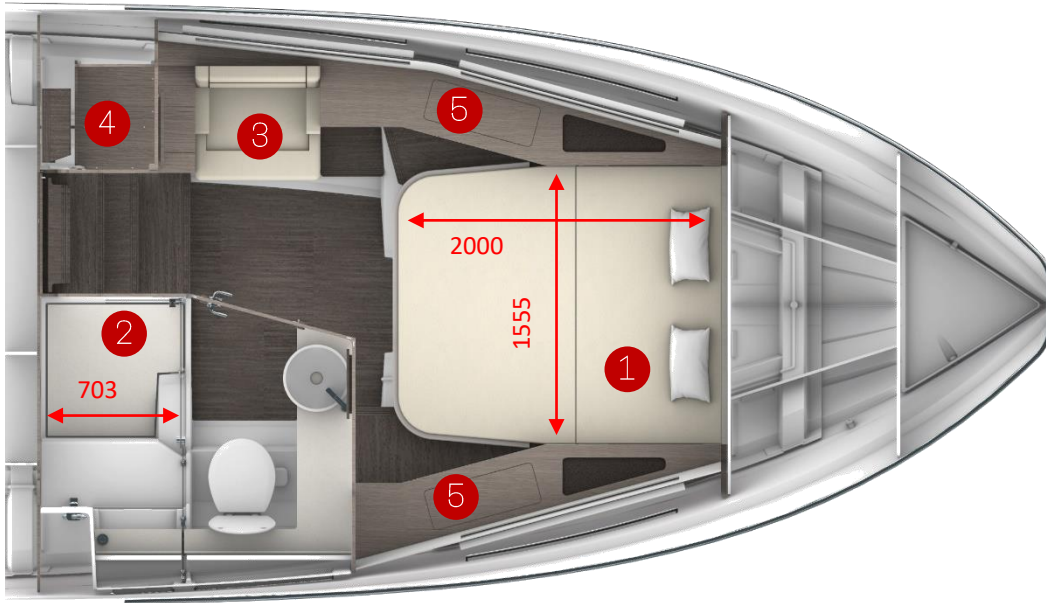
HELM STATION



- 1 2 Garmin GPSmap 8416 XSV
- 2 Joystick
- 3 2 cupholders
- 4 Bow thruster
- 5 VHF Garmin

INTERIOR

LOWER DECK



- ① Large bed
- ② En-suite bathroom w/ very spacious separate shower
- ③ Cabinet with sofa
- ④ Large wardrobe
- ⑤ Lots of storage

INTERIOR



INTERIOR

FOCUS ON STORAGE



- 1 Overhead lockers
- 2 Storage on each side
- 3 Storage under the bed

INTERIOR

HEAD

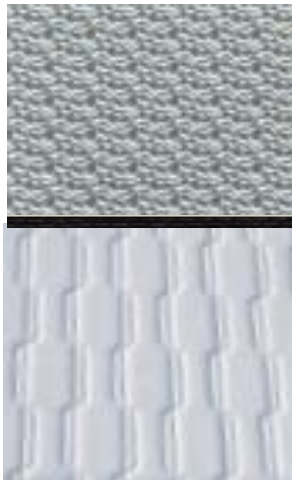


- ① Mirror
- ② Electric fresh water toilet
- ③ Separate shower
- ④ 2 opening portholes
- ⑤ Storage compartments
- ⑥ Corian worktop

ATMOSPHERE

EXTERIOR

SELLERIE /
UPHOLSTERY



**SPRADLING HITCH
ICEBERG/
SILVERTEX
CARBON PIPING**

SELLERIE /
UPHOLSTERY



**SPRADLING
DIAMENTE
HONEY**

CAPOTAGES /
AWNINGS



**SUNWORKER
CHARCOAL**

ATMOSPHERE

INTERIOR

**Boiserie intérieure
standard /**
*Interior woodworks
standard*



**NOYER GRIS /
GREY WALNUT**



**PLANCHER
FORTEZZA /
FLOORING
FORTEZZA**

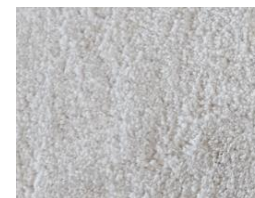
Tissu et cuir intérieur /
Fabric and leather interior



**OPTION
IVORY FABRIC**



**SPRADLING DOLCE
IVORY W/ DOLCE
CHOCOLATE PIPING**

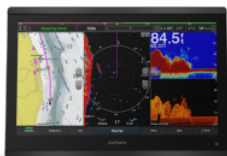


**CARPET NATURAL
EMBRACE N°30
TWINBACK**

ELECTRONIC PACKAGES

ELECTRONIC PACK

GPSMAP 8416xsv
MFD with multitouch 16" screen
and integrated 1kW Dual-CHIP Sonar



Garmin GT15M-IH
Mid-Band CHIRP Traditional
Depth and Temperature



ELECTRONIC PACK UPGRADED

2x GPSMAP 8416xsv (16") AT THE HELM

Garmin GT15M-IH

Mid-Band CHIRP Traditional Depth and Temperature



GPSMAP 8416xsv
MFD with multitouch 16" screen
and integrated 1kW Dual-CHIP Sonar



GPSMAP 8416xsv
MFD with multitouch 16" screen
and integrated 1kW Dual-CHIP Sonar



ELECTRONIC PACKAGES

OPTION

DOME RADAR

GMR FANTOM 18x

18-inch, 50 W solid-state dome radar
with MotionScope Technology



OPTION

OPEN ARRAY RADAR

GMR Fantom 54

4' antenna, 50 W solid-state, open array
radar with MotionScope Technology



TECHNICAL DATAS

Modèle	Motorisation	Longueur Coque	Puissance administrative du moteur (CV)	Droits longueur (€)	Droits moteurs (€)	Total droits (€)
Wellcraft 355	MERCURY 3 x 350cv V8	10,73	3 X 14,88	240	945	1185
	MERCURY 3 x 300cv V8		3 X 26,2		2772	3012
	YAMAHA 3 x 400 XTO (3 x 400CV)		3 X 31,85		3432	3672
	YAMAHA 3 x 300 cv		3 X 23,89		2160	2400

***Ces prix sont donnés à titre indicatif et sous réserve des modifications liées à la législation en vigueur au moment de l'enregistrement du bateau

TECHNICAL DATAS

Bateaux / Boats	Version	Longueur HT / Length overall (m)	Largeur HT / Width overall (m)	Hauteur Colisage / Height overall (m)	Poids est. / Est. Weight (kg)	Poids ber / Weight cradle (kg)	Longueur ber / Length cradle (m)	Largeur ber / Width cradle (m)
Wellcraft 355	HB	11,84	3,27	4,33	5927	210	6,76	2,1

Poids des bateaux : moteur maxi inclus / Weight boats: with max. engine size

TECHNICAL DATAS

Wellcraft 355



MERCURY 3x300 verado

Caractéristique / Specifications:

2 moteurs Hors Bord / Out Board engines: Verado 300

Hélice / Propeller: Revolution 4

Déplacement total du bateau / Total displacement of boat tested: 9680 Kg

Regime en tours par minute au tableau de bord / RPM on instrument panel	Vitesse en nœuds moyenne au radar / Average speed on the radar in knots	Consommation moteur en litres par heure / consumption engine in liter an hour	Rendement / Efficiency (NM/L)	Consommation totale en USGal / heure Total consumption in GPH	Rendement / Efficiency (NM/USGal)	Autonomie en NM (avec réserve 20%) /Range in NM (with 20% fuel supply)	Remarques / Comments
600	3,1 Nds	9,0 l	2,9l/miles	2,4 USGal	,77 USGal/NM	275,56 MN	
1000	4,8 Nds	15,6 l	3,3l/miles	4,1 USGal	,87 USGal/NM	243,59 MN	
1500	7,0 Nds	24,6 l	3,5l/miles	6,5 USGal	,93 USGal/NM	227,64 MN	
2000	8,6 Nds	40,2 l	4,7l/miles	10,6 USGal	1,24 USGal/NM	170,15 MN	
2500	9,6 Nds	61,5 l	6,4l/miles	16,2 USGal	1,70 USGal/NM	124,23 MN	
3000	13,9 Nds	83,1 l	6,0l/miles	22,0 USGal	1,59 USGal/NM	133,33 MN	
3500	18,5 Nds	107,4 l	5,8l/miles	28,4 USGal	1,54 USGal/NM	137,43 MN	
4000	27,4 Nds	125,4 l	4,6l/miles	33,1 USGal	1,21 USGal/NM	174,48 MN	
4500	32,9 Nds	156,3 l	4,8l/miles	41,3 USGal	1,26 USGal/NM	168,39 MN	
5000	38,0 Nds	222,0 l	5,8l/miles	58,6 USGal	1,55 USGal/NM	136,76 MN	
5500	42,2 Nds	255,0 l	6,0l/miles	67,4 USGal	1,60 USGal/NM	132,24 MN	
6000	46,0 Nds	291,0 l	6,3l/miles	76,9 USGal	1,67 USGal/NM	126,46 MN	

Conditions optimales théoriques et purement indicatives des essais : /Optimal theoretical conditions, purely indicative for trials :

Coque neuve, vent 5nds, mer belle petit clapot, pas d'antifouling / new hull, wind 5 knots, nice little choppy sea, no antifouling



TECHNICAL DATAS

Wellcraft 355



MERCURY 3x350 verado

Caractéristique / Specifications:

2 moteurs Hors Bord / Out Board engines: Verado 300

Hélice / Propeller: Revolution 4

Déplacement total du bateau / Total displacement of boat tested: 9530 Kg

Regime en tours par minute au tableau de bord / RPM on instrument panel	Vitesse en nœuds moyenne au radar / Average speed on the radar in knots	Consommation moteur en litres par heure / consumption engine in liter an hour	Rendement / Efficiency (NM/L)	Consommation totale en USGal / heure Total consumption in GPH	Rendement / Efficiency (NM/USGal/)	Autonomie en NM (avec réserve 20%) /Range in NM (with 20% fuel supply)	Remarques / Comments
600	3,1 Nds	5,8 l	1,9l/miles	1,5 USGal	,49 USGal/NM	427,59 MN	
1000	5,1 Nds	13,7 l	2,7l/miles	3,6 USGal	,71 USGal/NM	297,81 MN	
1500	7,3 Nds	22,6 l	3,1l/miles	6,0 USGal	,82 USGal/NM	256,64 MN	
2000	8,6 Nds	38,4 l	4,5l/miles	10,1 USGal	1,19 USGal/NM	178,13 MN	
2500	10,0 Nds	64,4 l	6,4l/miles	17,0 USGal	1,70 USGal/NM	124,22 MN	
3000	15,8 Nds	94,6 l	6,0l/miles	25,0 USGal	1,59 USGal/NM	133,19 MN	
3500	24,1 Nds	106,8 l	4,4l/miles	28,2 USGal	1,17 USGal/NM	180,15 MN	
4000	30,4 Nds	132,1 l	4,4l/miles	34,9 USGal	1,15 USGal/NM	183,80 MN	
4500	35,9 Nds	169,9 l	4,7l/miles	44,9 USGal	1,25 USGal/NM	169,04 MN	
5000	40,5 Nds	236,5 l	5,8l/miles	62,5 USGal	1,54 USGal/NM	136,83 MN	
5500	45,2 Nds	299,2 l	6,6l/miles	79,0 USGal	1,75 USGal/NM	120,72 MN	
6000	48,4 Nds	352,0 l	7,3l/miles	93,0 USGal	1,92 USGal/NM	110,00 MN	
	50,1 Nds		7,0l/miles				

Conditions optimales théoriques et purement indicatives des essais: /Optimal theoretical conditions, purely indicative for trials :

Coque neuve, vent 5nds, mer belle petit clapot, pas d'antifouling / new hull, wind 5 knots, nice little choppy sea, no antifouling



TECHNICAL DATAS

Wellcraft 355



YAMAHA 3x300

Caractéristique / Specifications:

2 moteurs Hors Bord / Out Board engines: F300SBW

Hélice / Propeller: Saltwater 17

Déplacement total du bateau / Total displacement of boat tested: 9530 Kg

Regime en tours par minute au tableau de bord / RPM on instrument panel	Vitesse en nœuds moyenne au radar / Average speed on the radar in knots	Consommation moteur en litres par heure / consumption engine in liter an hour	Rendement / Efficiency (NM/L)	Consommation totale en USGal / heure Total consumption in GPH	Rendement / Efficiency (NM/USGal)	Autonomie en NM (avec réserve 20%) /Range in NM (with 20% fuel supply)	Remarques / Comments
600	3,3 Nds	7,8 l	2,4l/miles	2,1 USGal	,63 GAL/NM	333,33 MN	
1000	5,5 Nds	15,1 l	2,7l/miles	4,0 USGal	,72 GAL/NM	291,39 MN	
1500	7,6 Nds	25,6 l	3,4l/miles	6,8 USGal	,89 GAL/NM	237,50 MN	
2000	9,2 Nds	42,6 l	4,6l/miles	11,3 USGal	1,22 GAL/NM	172,77 MN	
2500	10,9 Nds	62,2 l	5,7l/miles	16,4 USGal	1,51 GAL/NM	139,55 MN	
3000	12,8 Nds	75,1 l	5,9l/miles	19,8 USGal	1,56 GAL/NM	135,82 MN	
3500	17,2 Nds	100,8 l	5,9l/miles	26,6 USGal	1,55 GAL/NM	136,11 MN	
4000	27,9 Nds	131,2 l	4,7l/miles	34,7 USGal	1,24 GAL/NM	169,82 MN	
4500	32,5 Nds	165,0 l	5,1l/miles	43,6 USGal	1,34 GAL/NM	157,33 MN	
5000	36,2 Nds	204,1 l	5,6l/miles	53,9 USGal	1,49 GAL/NM	141,89 MN	
5500	40,4 Nds	249,1 l	6,2l/miles	65,8 USGal	1,63 GAL/NM	129,59 MN	
6000	44,6 Nds	300,1 l	6,7l/miles	79,3 USGal	1,78 GAL/NM	118,89 MN	

Conditions optimales théoriques et purement indicatives des essais: /Optimal theoretical conditions, purely indicative for trials :

Coque neuve, vent 5nds, mer belle petit clapot, antifouling / new hull, wind 5 knots, nice little choppy sea, antifouling



This document was updated in July 2022.
It may contain illustrations or text representing
or referring to optional equipment.
If changes appear on our 2023 models,
with regard to equipment or options referred to
in this document,
only the current Wellcraft rate will apply.